

PC Tool

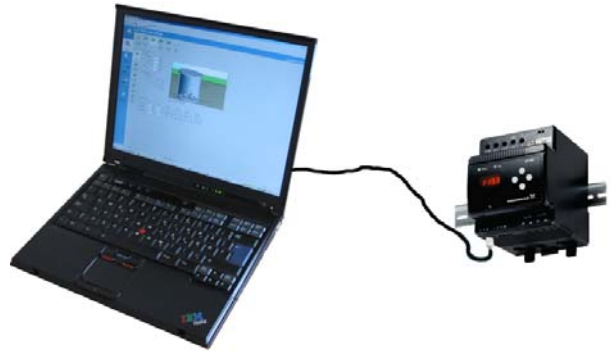
Ⓒ Installation and operating instructions

CONTENTS

	Page
1. PC Tool	3
2. Introduction	4
Requirements	
Configuring the PC tool	
Configuring a modem connection	
Connecting to a unit	
Establishing a direct connection via PC Tool link	
Establishing a direct connection via G100 gateway	
Establishing a modem connection via G100 gateway	
Establishing a connection chosen from telephone book	
Unit not responding	
Disconnecting and reconnecting	
Using the tool	
User interface overview	
Navigation with keyboard	
Monitor	
Monitor	
System overview	
Unit overview	
Alarm log	
Min./max. log	
Summation counters	
Commands	
Edit & view settings	
Edit & view settings	
Basic settings	
Trip & warning settings	
Trip counters	
Save settings	
Saving a standard configuration	
Loading a standard configuration	
My installations	
My installations	
Managing installations	
Managing units	
My standard configurations	
My standard configurations	
Importing a standard configuration	
Exporting a standard configuration	
CU 3	
CU 3 max. current configuration	
Adjusting time in the CU 3	

1. PC Tool

Version: V.02

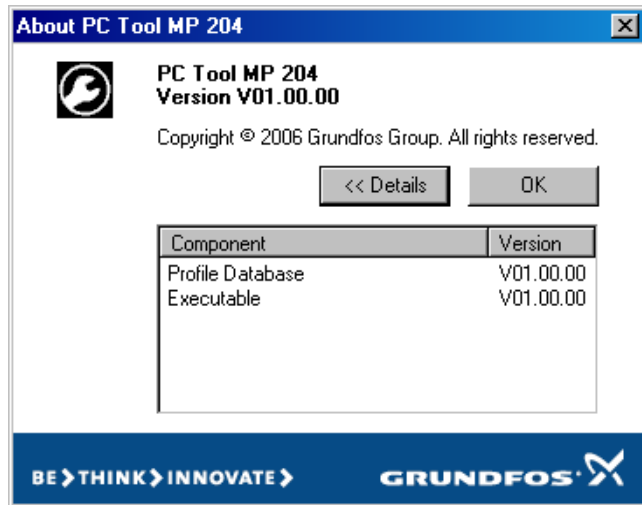


2. Introduction

The Grundfos *PC Tool MP 204* is a management and service tool for MP 204 and CU 3 motor protectors.

The tool can be used for on-site service as well as for verification and management.

Click **Help > About** in the menu bar to see the current version of the PC tool.



This manual covers the general aspects of using the PC tool. It provides no information on specific application topics.

2.1 Requirements

Processor	Pentium III 900MHz or higher
RAM	Min. 256 MB
Free hard disc space	Min. 300 MB
Operating system	Microsoft Windows 2000 SP4 or later. Only US versions guaranteed.
Monitor resolution	1024 x 768 pixels*)
Peripherals	CD-ROM drive. Mouse or other pointing device. RS-232 serial port.
Other requirements	PC Tool Link or G100 gateway

*) Recommended

3. Configuring the PC tool

A direct connection and/or modem connection can be configured, depending on how you want to communicate with the unit.

3.1 Configuring a modem connection

Before configuring a modem connection, set up the modem in the Windows environment. In most cases, the modem is set up via 'plug and play'. For further information, consult the modem manual.

To configure the modem connection, click **Tools > Options** and select the **Modems** tab.



The **Modems** window opens.

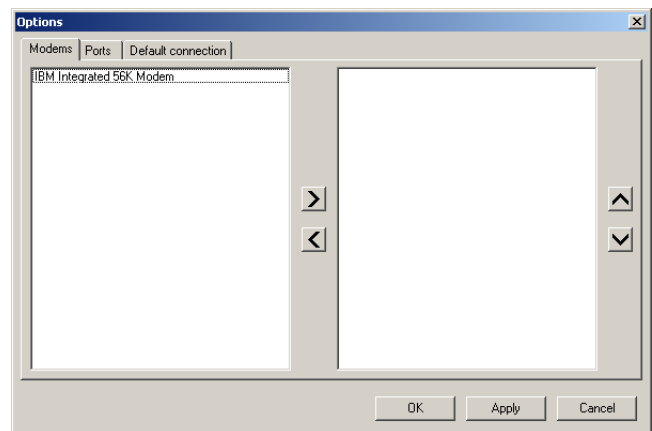
The left window displays all unassigned modems.

The right window displays all assigned PC tool modem ports.

The first time the **Modems** window is opened, the PC tool modem ports window is empty.

Use the left/right arrow to add/remove a modem connection for the PC tool.

When you have selected a modem connection, click **[Apply]** and/or **[OK]**.



It is possible to assign multiple modem connections. The assigned modems will be displayed in a selection box when you try to establish a modem connection to a unit. The order in which the modems appear in the selection box can be controlled with the up and down arrows.

If no modems appear in the list, you have to configure a modem in the Windows environment.

4. Connecting to a unit

Note: If two or more units are connected to the same Grundfos GENIbus, each unit must have a unique GENIbus address assigned, for example with the Grundfos R100 remote control.

Connection to a unit can be made in four different ways:

- Direct connection via PC Tool link
- Direct connection via G100 gateway
- Modem connection via G100 gateway
- Connection chosen from telephone book.

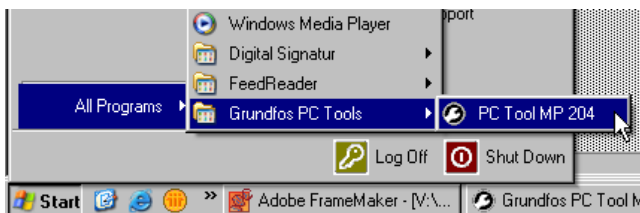
The direct connection is mainly for on-site service and management.

The modem connection is mainly for off-site service and management.

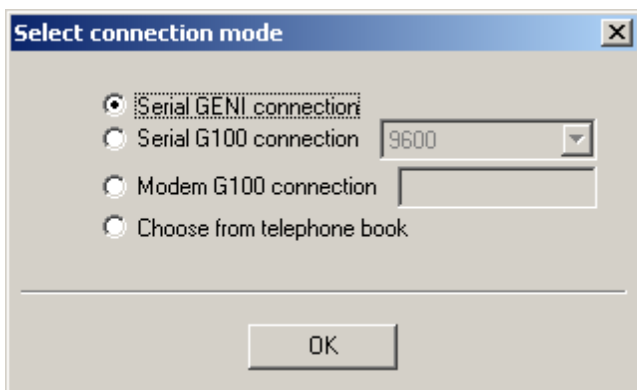
4.1 Establishing a direct connection via PC Tool link

If you want to use the direct connection, your PC must have a free serial port (RS-232) and a PC Tool Link kit. Connect the cables before turning on your PC.

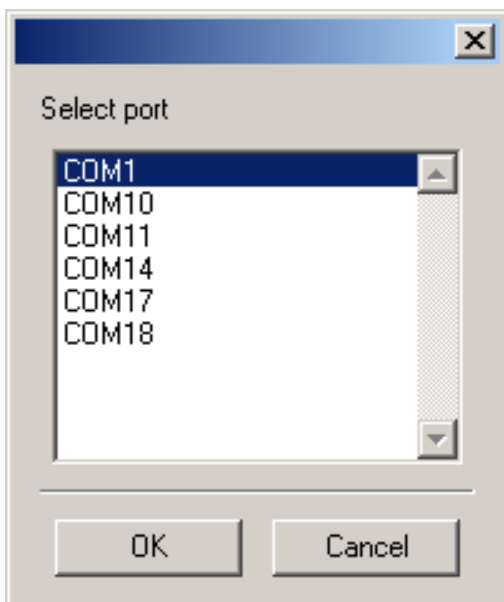
Turn on your PC. To start the PC tool, click **Start > All Programs > Grundfos PC Tools > PC Tool MP 204**.



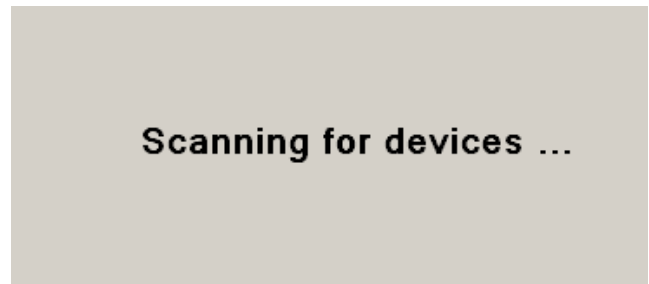
When the PC tool starts up, a **Select connection mode** dialog box appears. To establish a direct connection, select **Serial GENI connection**. Click [OK] or press [Enter].



If two or more COM ports are available, a selection box appears. Select the COM port to which the PC Tool link is connected.



During the connecting process, status information will be displayed.



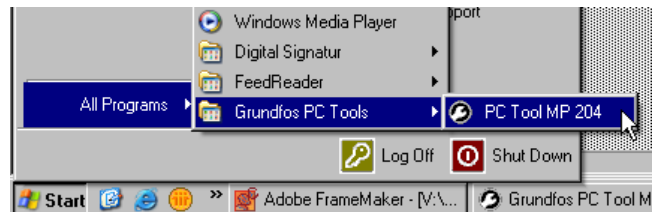
When the connection has been established, the On-line icon appears in the lower right corner.



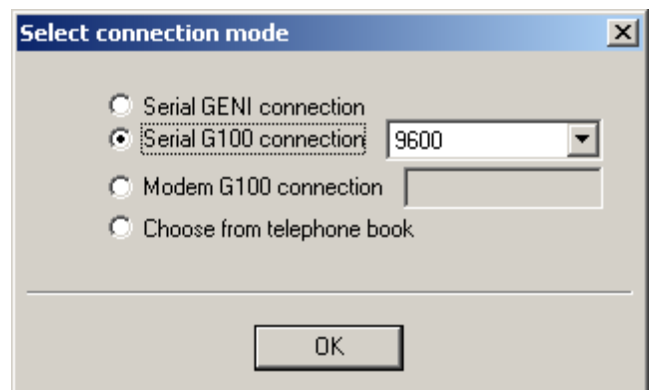
When the connection has been established, the PC tool opens the start window. The PC tool is ready for use.

4.2 Establishing a direct connection via G100 gateway

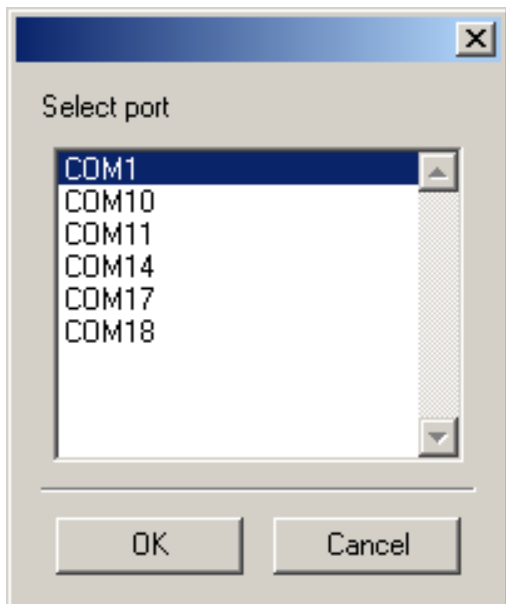
Turn on your PC. To start the PC tool, click **Start > All Programs > Grundfos PC Tools > PC Tool MP 204**.



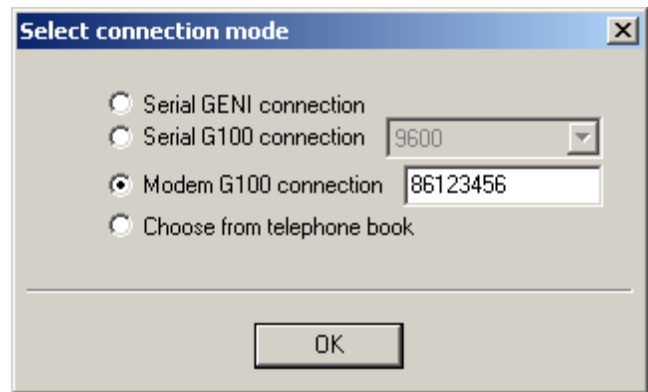
When the PC tool starts up, a **Select connection mode** dialog box appears. To establish a direct connection, select **Serial G100 connection** and select connection speed in the drop-down box. Click [OK] or press [Enter].



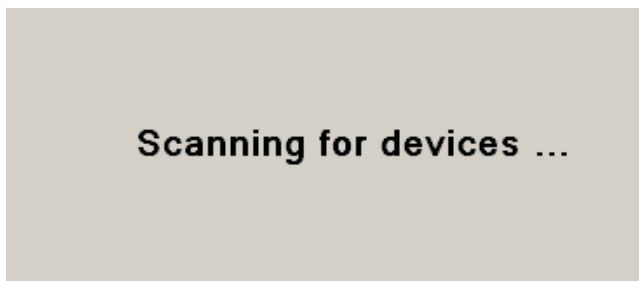
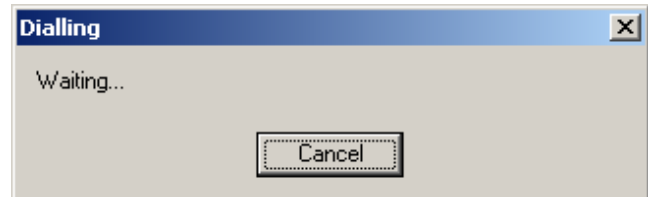
If two or more COM ports are available, a selection box appears. Select the COM port to which the PC Tool link is connected.



During the connecting process, status information will be displayed.



During the connecting process, status information will be displayed.



When the connection has been established, the On-line icon appears in the lower right corner.



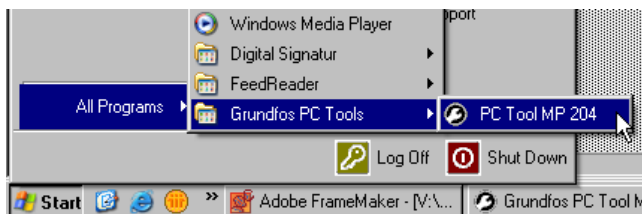
When the connection has been established, the PC tool opens the start window. The PC tool is ready for use.

4.3 Establishing a modem connection via G100 gateway

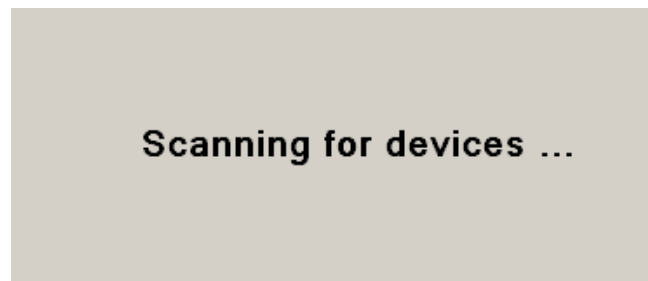
It is only possible to establish a modem connection to a unit with a modem.

If you use an external modem, connect it to your PC.

Turn on your PC. To start the PC tool, click **Start > All Programs > Grundfos PC Tools > PC Tool MP 204**.



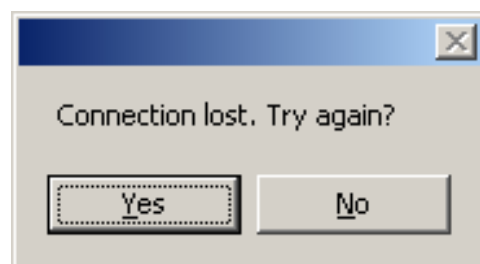
When the PC tool starts up, a **Select connection mode** dialog box appears. To establish a modem connection, select **Modem G100 connection** and enter the telephone number. Click **[OK]** or press **[Enter]**.



When the connection has been established, the On-line icon appears in the lower right corner.



If the connection attempt fails, an error message appears. Before you try to reconnect, check the modem connection.

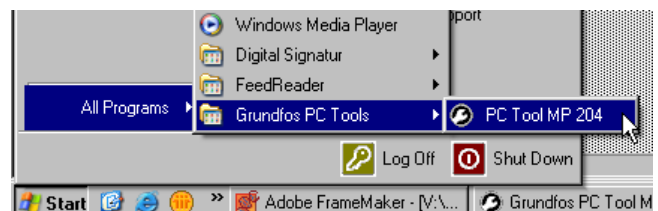


When the connection has been established, the PC tool opens the start window. The PC tool is ready for use.

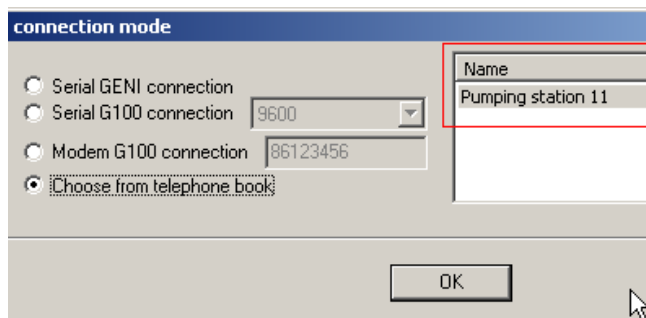
4.4 Establishing a connection chosen from telephone book

If you use an external modem, connect it to your PC.

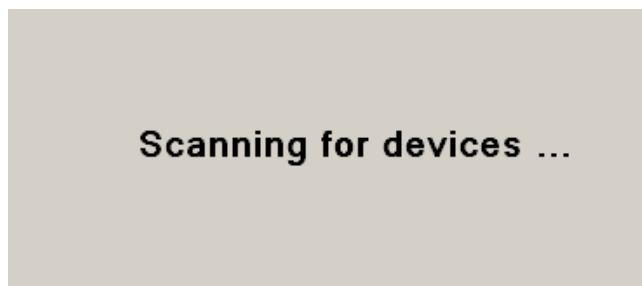
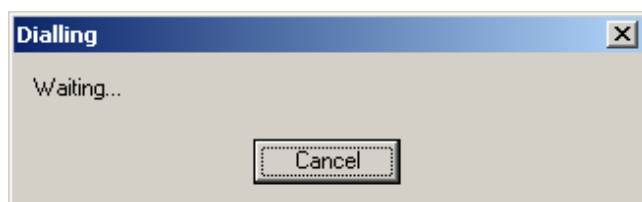
Turn on your PC. To start the PC tool, click **Start > All Programs > Grundfos PC Tools > PC Tool MP 204**.



When the PC tool starts up, a **Select connection mode** dialog box appears. To establish a connection, select **Choose from telephone book** and select installation name in the drop-down window. Click [OK] or press [Enter].



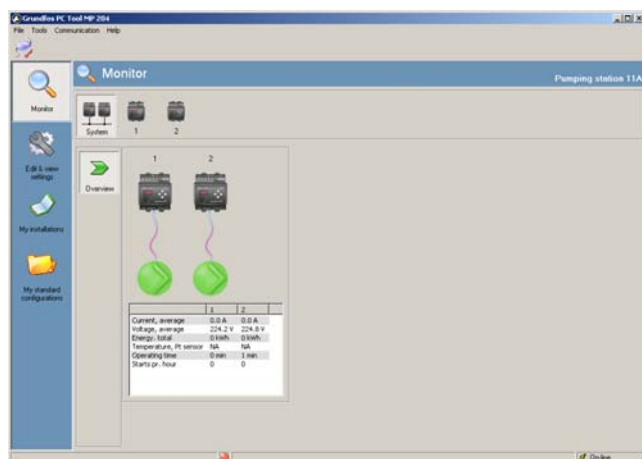
During the connecting process, status information will be displayed.



When the connection has been established, the On-line icon appears in the lower right corner.



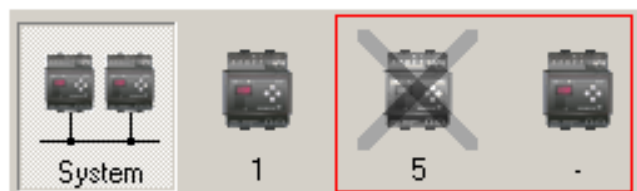
When the connection has been established, the PC tool opens the start window. The PC tool is ready for use.



4.5 Unit not responding

If a unit is not responding or missing, the unit icon has an "X" across it and turns grey.

A new unconfigured unit will have the name "-".

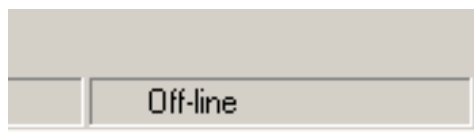


4.6 Disconnecting and reconnecting

When you are on-line with a unit and want to disconnect, click the disconnect icon.



When the PC tool is disconnected from the unit, the On-line indication in the lower right corner changes to Off-line.



To reconnect the unit, click the connect icon.



When the icon is clicked, the connection dialog box appears. The connect and disconnect icons can be clicked at any time.

5. Using the tool

This section describes how to use the PC tool. The description starts with a general overview, followed by a description of each of the PC tool main functions (user functions).

5.1 User interface overview

The user interface is divided into four main sections:

5.1.1 Menu and tool bars

The menu and tool bars change according to the selected user task.

5.1.2 Task bar

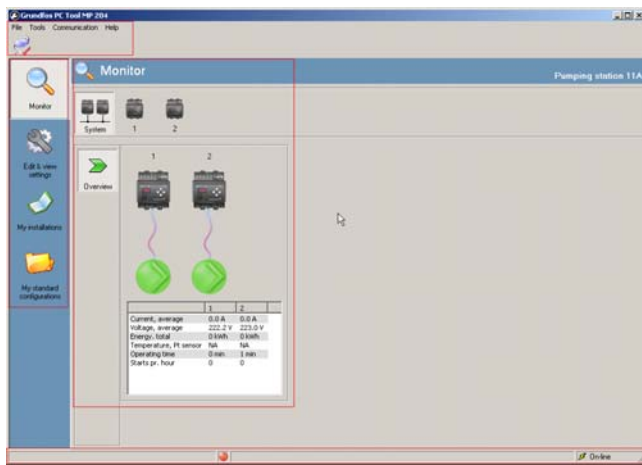
The task bar comprises all supported user tasks or user functions.

5.1.3 Work area

The work area is the area where the user function works.

5.1.4 Status bar

The status bar displays status information and messages about current activities.



5.2 Navigation with keyboard

ALT + UP / ALT + DOWN: Navigates up and down in the task bar.

TAB / SHIFT + TAB: Moves cursor to next/previous position.

In the **Monitor** and **Edit & view settings** windows:

CTRL + TAB / CTRL + SHIFT + TAB: Moves between units.

ALT + LEFT / ALT + RIGHT: Moves between sub tasks (arrows).

6. Monitor

6.1 Monitor

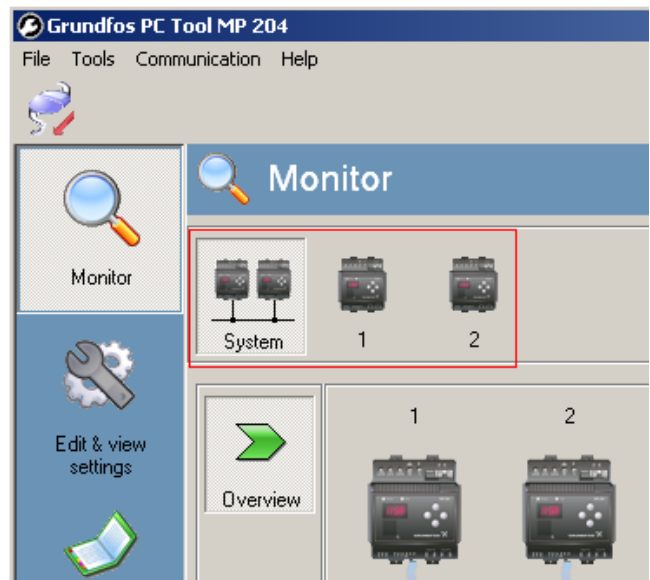
You can choose to monitor

- the **System**, which gives a system overview with key values of each connected unit, or
- a specific unit, which gives a detailed overview with all values of the unit.

The monitor function also allows you to view logs.

Although the monitor shows real-time data, there will be some delay in responding to commands and from data shown in the unit.

In the unit selection bar, you can select **System**, **1**, **2**, etc. The number below the icon is the R100 unit number.

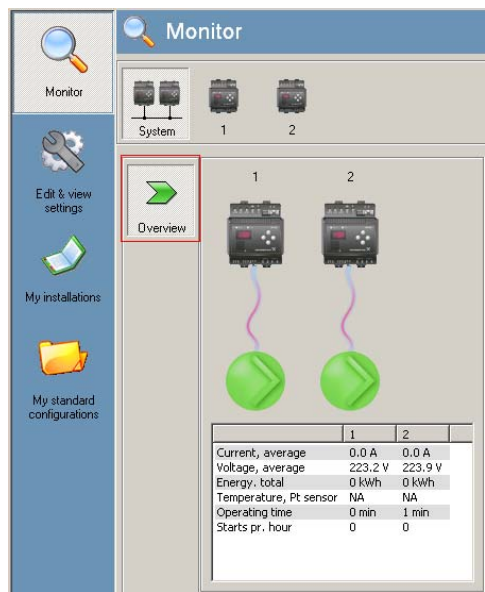


In the navigation bar, you can select **Overview**, **Alarm log**, **Min./max. log**, **Summation counters** or **Commands** depending whether **System** or a **unit** is selected. Each view gives you detailed information on the selected item. Each view is described in the following sections.



6.2 System overview

The **Overview** displays the current status and key values of all connected units.



Symbols indicating the current status of the units:

Symbol	Description
	Running

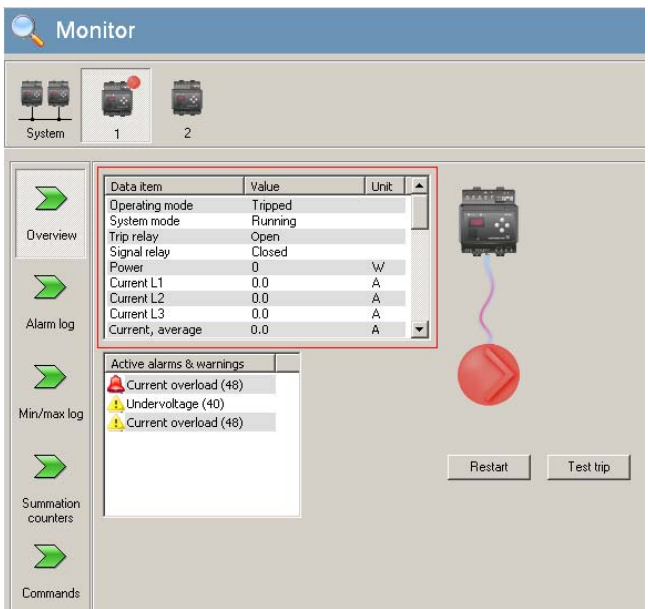
	Running, but with warning
	Tripped

If a unit has tripped, a red icon appears at the tripped unit.



6.3 Unit overview

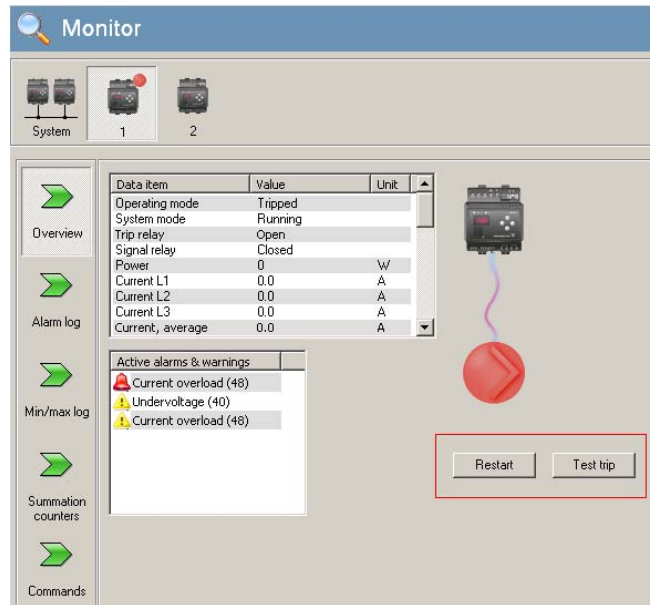
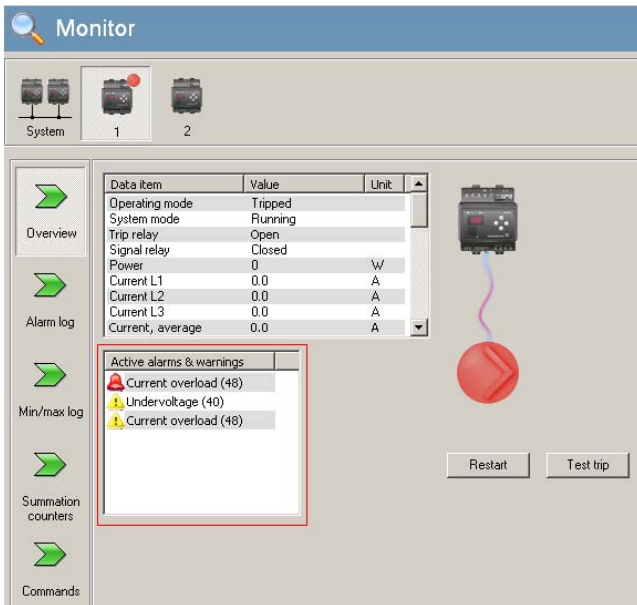
The unit overview is divided into four sections. The **Status** section displays all status values of the unit.





The **Active alarms & warnings** section shows current alarms and warnings.

Note: The alarms and warnings are not indicated in the order of occurrence.

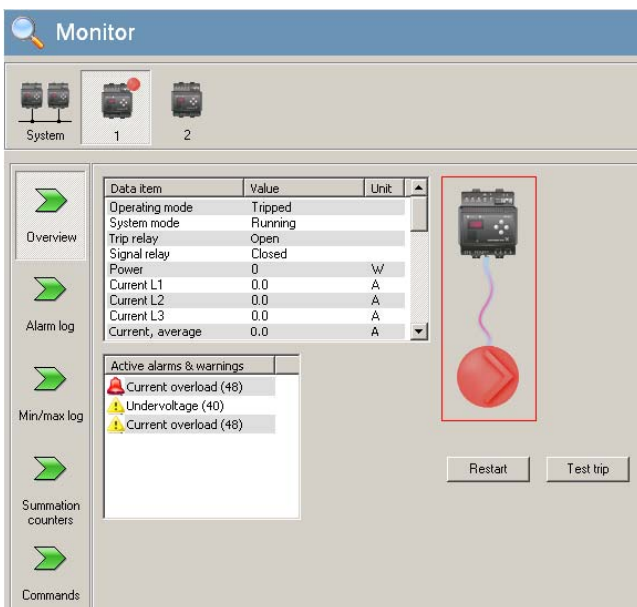
The number in brackets is the alarm or warning code shown in the display of the unit.



Symbols for **Active alarms & warnings**:

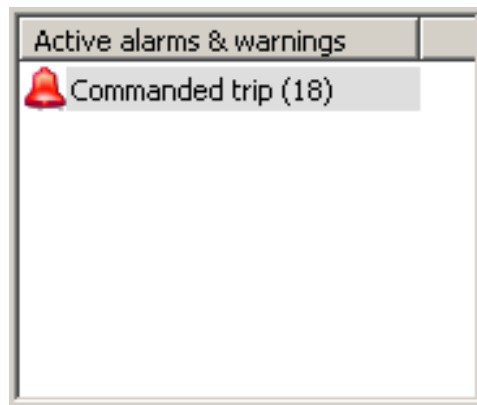
Symbol	Description
	Alarm
	Warning

The **Graphical** section displays the current status of the pumps.



The **Control** section allows you to [**Restart**] the unit or to run the [**Test trip**] function.

The [**Test trip**] function tests the alarm and trip relays. The alarm message **Commanded trip (18)** appears in the **Active alarms & warnings** section.

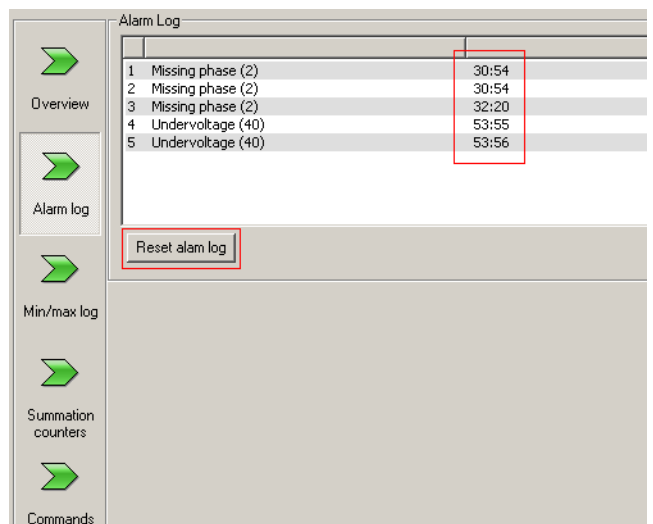


6.4 Alarm log

The **Alarm log** view displays the latest five alarms logged by the unit. To clear the log, click [**Reset alarm log**].

The time displayed to the right indicates the time which has passed since the MP 204 tripped.

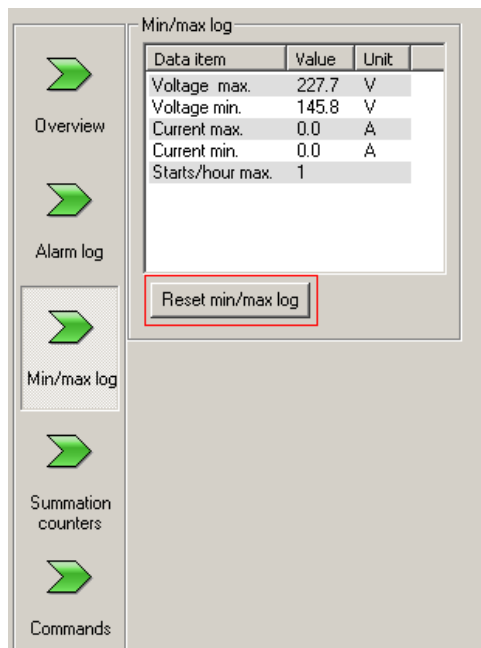
Note: The time is measured only as long as the MP 204 is powered. The clock stops when the MP 204 is no longer powered.



6.5 Min./max. log

The **Min./max. log** displays maximum and minimum values. To

clear the log, click [**Reset min./max. log**].

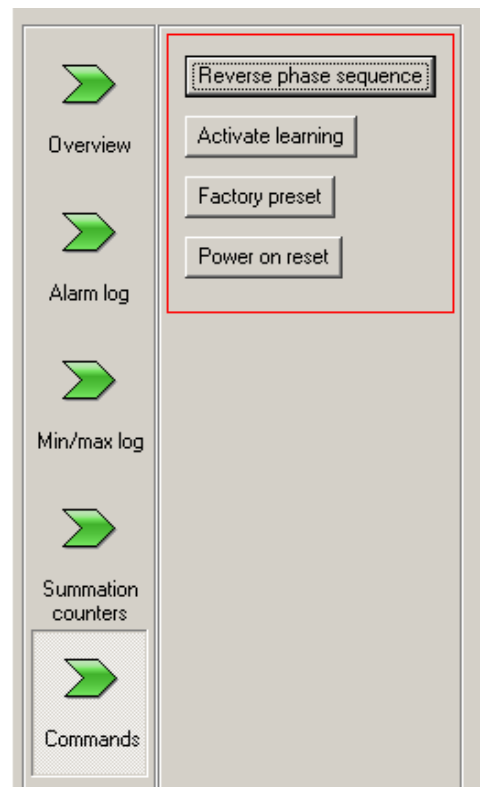


[**Reverse phase sequence**] reverses the phase sequence. See **Unit overview**.

[**Activate learning**] reactivates the learning process.

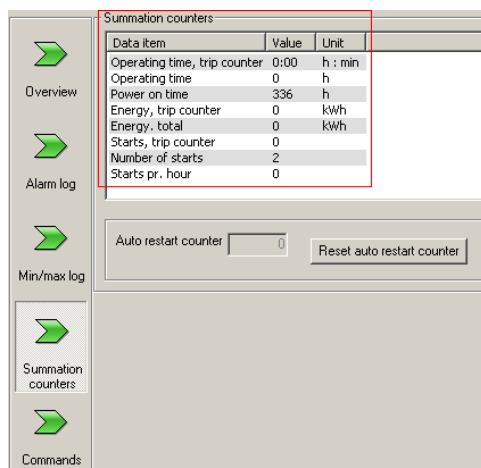
[**Factory preset**] resets the unit to factory settings.

[**Power on reset**] restarts the unit, i.e. same as disconnecting and reconnecting power supply.

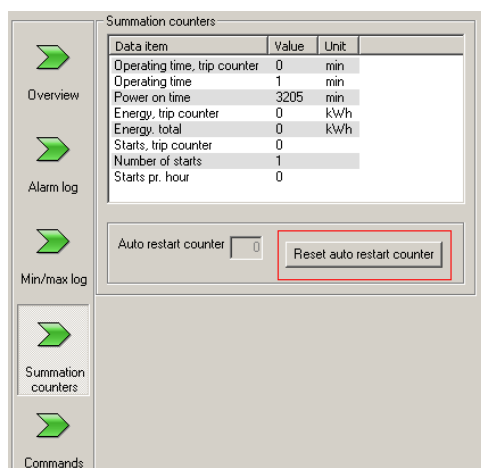


6.6 Summation counters

The **Summation counters** view gives an overview of counters. It is possible to preset or reset a **Trip counter** in the **Edit & view settings** window. The other counters are cumulative and cannot be reset.



To clear the **Auto restart counter**, click [**Reset auto restart counter**].



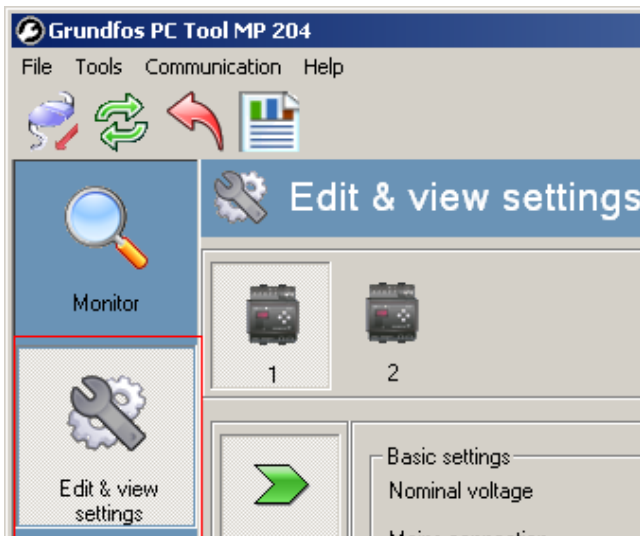
6.7 Commands

To activate a function in the unit, click the appropriate button.

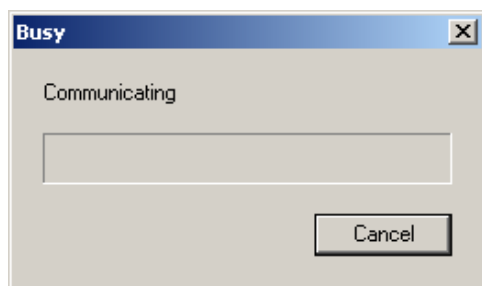
7. Edit & view settings

7.1 Edit & view settings

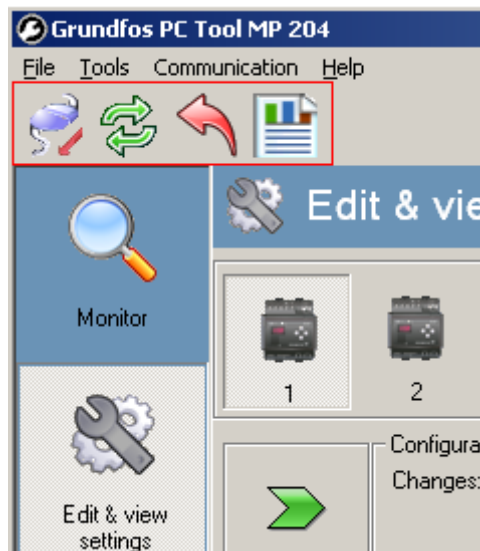
To change unit settings, click **Edit & view settings**.



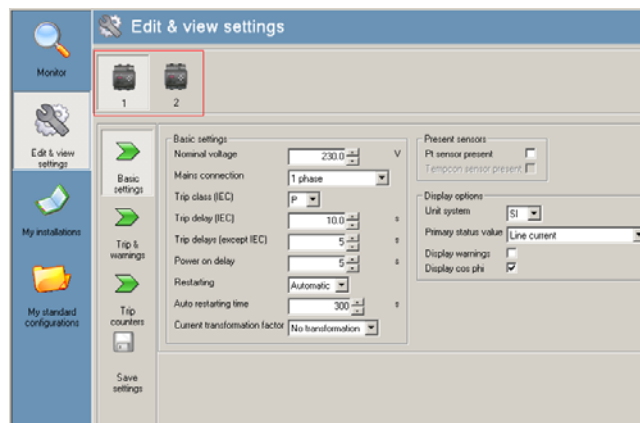
When the PC tool is reading data from the units, a progress bar appears.



In the toolbar, you can click the **Disconnect**, **Reload**, **Undo** or **View report** icons.



In the main window, select the unit to be set.



Use the navigation bar to select

Basic settings

Trip & warning settings

Trip counters

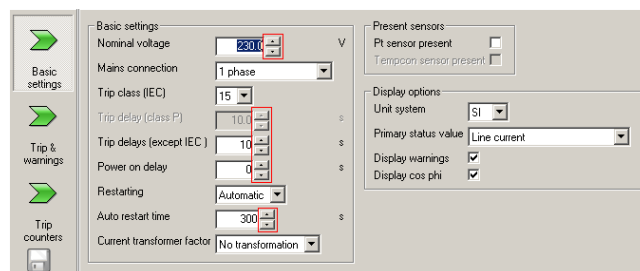
Save settings.

Each view is described in the following sections.

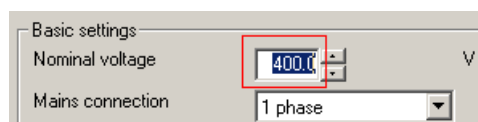
7.2 Basic settings

The changes are not saved to the unit until you click the **Save settings** icon.

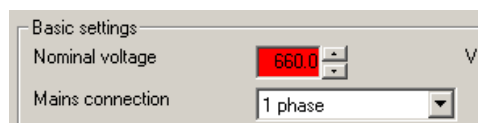
Use the up and down arrows to change the values,



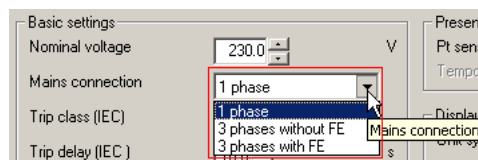
or enter a value directly in the field.



If you enter an invalid value, the field turns red and you cannot save the changes to the unit.



To change the setting in a drop-down box, click the arrow. Then you will get a list of options. Select the appropriate option.



A dimmed grey box indicates that the box and data values are disabled due to another setting that automatically disables the box and data values.

Basic settings

Nominal voltage: 230.0 V

Mains connection: 1 phase

Trip class (IEC): 45

Trip delay (IEC): 10.0 s

Trip delays (except IEC): 10 s

Power on delay: 5 s

Restarting: Automatic

Auto restarting time: 300 s

Current transformation factor: No transformation

A check mark enables a function.

Present sensors

Pt sensor present: ☒

Tempcon sensor present: ☐

Display options

Unit system: SI

Primary status value: Line current

Display warnings: ☐

Display cos phi: ☒

If the check box is empty, the function is disabled.

Present sensors

Pt sensor present: ☐

Tempcon sensor present: ☐

Display options

Unit system: SI

Primary status value: Line current

Display warnings: ☐

Display cos phi: ☒

7.3 Trip & warning settings

To set trip and warning limits, select **Trip & warning settings**.

Monitor

Edit & view settings

1 2

Basic settings

Trip & warnings

Trip & warning settings

☒ Overvoltage

☒ Undervoltage

☒ Current overload

☒ Current underload

☒ Current unbalance

☒ Phase sequence

A check mark enables the trip and warning function.

Trip & warning settings

☒ Overvoltage

☒ Undervoltage

☒ Current overload

☒ Current underload

Trip lim. 20 %

Warning lim. 15 %

Auto restart ☒

To disable a trip and warning function, remove the check mark. The text and value fields are dimmed grey.

Trip & warning settings

☐ Overvoltage

☒ Undervoltage

☒ Current overload

☒ Current underload

Trip lim. 20 %

Warning lim. 15 %

Auto restart ☒

If you enter contradictory values, the field turns yellow, but you can still save the changes to the unit. This is useful if, for instance, you want the unit to trip without any warning.

Trip & warning settings

☒ Overvoltage

☒ Undervoltage

☒ Current overload

☒ Current underload

Trip lim. 20 %

Warning lim. 25 %

Auto restart ☒

If you enter an invalid value, the field turns red and you cannot save the changes to the unit.

Trip & warning settings

☒ Overvoltage

☒ Undervoltage

☒ Current overload

☒ Current underload

Trip lim. 20 %

Warning lim. 40 %

Auto restart ☒

7.4 Trip counters

To preset trip counters, click **Trip counters**.

Monitor

Edit & view settings

1 2

Trip counters

☒ Operating time, trip counter

☐ Starts, trip counter

☐ Energy, trip counter

Basic settings

Trip & warnings

Trip counters

To preset a counter, write-enable the field by putting a check mark in the check box and enter a value.

Trip counters

☒ Operating time, trip counter

☐ Starts, trip counter

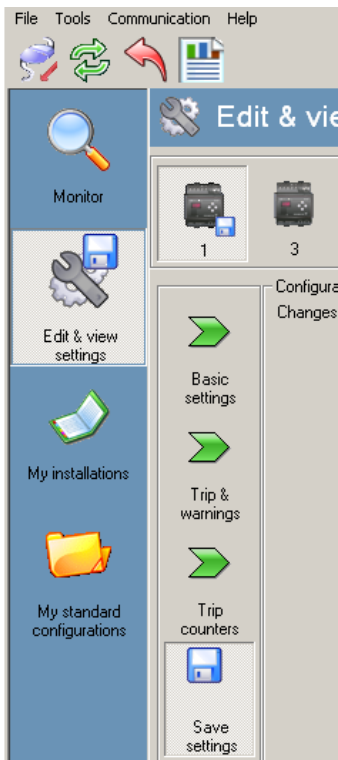
☐ Energy, trip counter

6000 min

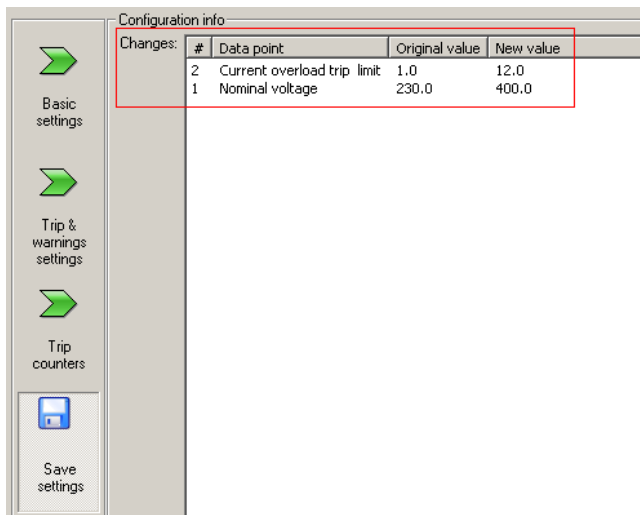
0 kwh

7.5 Save settings

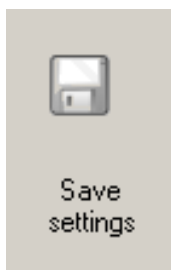
To save your changes to the unit, click the **Save settings** icon.



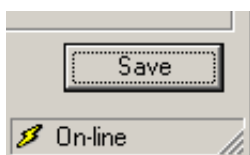
A window shows the values that have been changed.



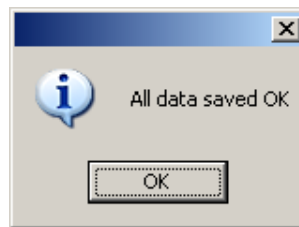
If no changes have been made or invalid values have been entered, the icon is dimmed grey.



To save the data to the unit, click [Save].



When the data has been saved successfully, a message box appears. Click [OK] to continue.

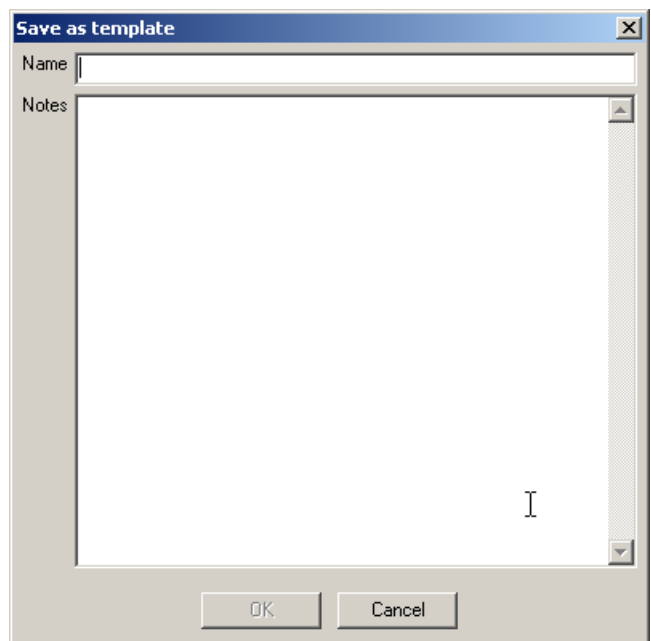


7.6 Saving a standard configuration

To save the current settings as a standard configuration for later use, click **Tools** and select **Save as standard configuration**.



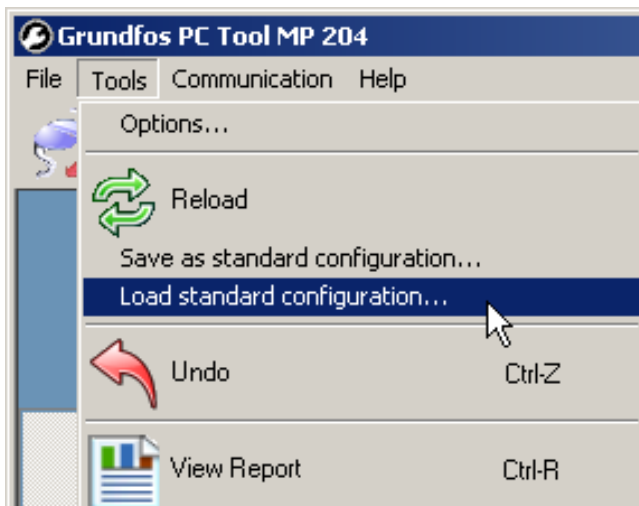
Enter a **Name** and, if necessary, additional information in the **Notes** field. Click [OK].



A list of saved standard configurations can be found in **My standard configurations**.

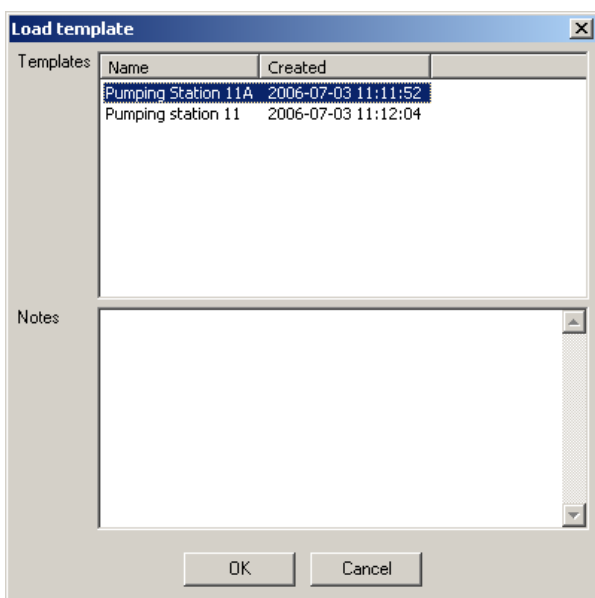
7.7 Loading a standard configuration

To use a standard configuration, click **Tools** and select **Load standard configuration**.

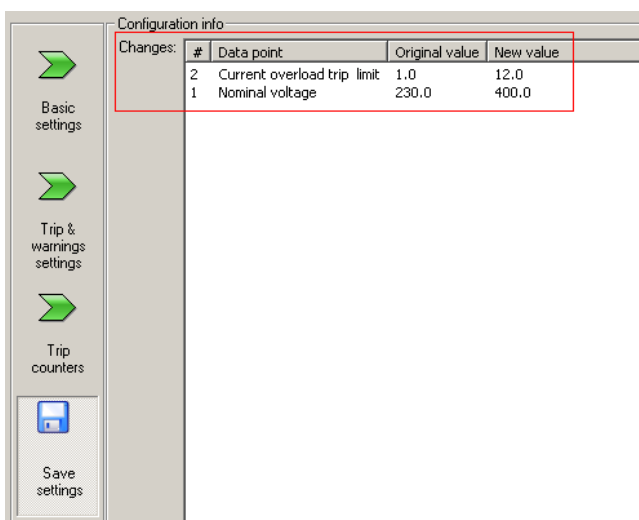


Select template and click [OK].

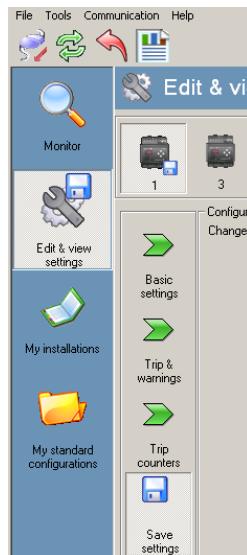
Note: All current settings will be overwritten. To undo a loaded template, click the **Reload** icon.



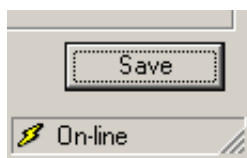
When a standard configuration has been loaded, it will be indicated in the **Save settings** window.



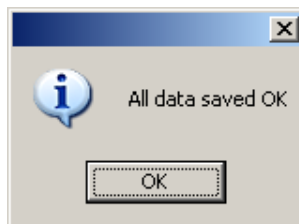
To save the loaded configuration to the unit, click the **Save settings** icon.



To save the data to the unit, click [Save].



When the data has been saved successfully, a message box appears. Click [OK] to continue.



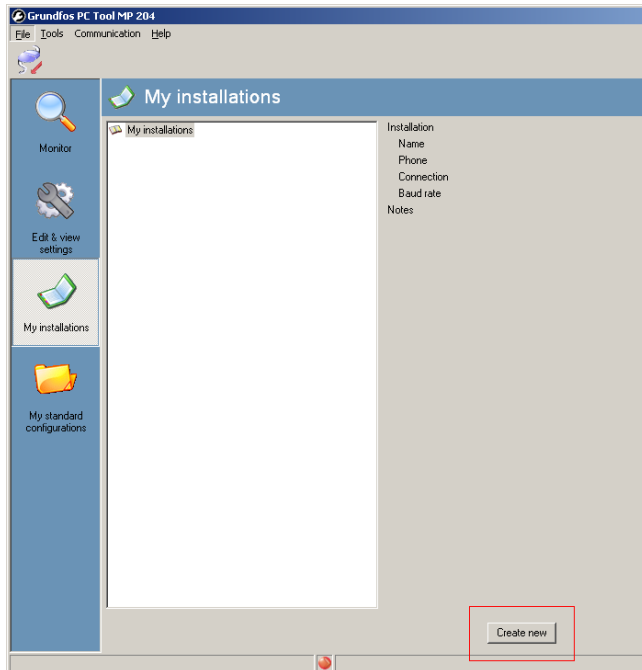
8. My installations

8.1 My installations

An installation is a named GENI network.

In the main window, you can add or modify an installation.

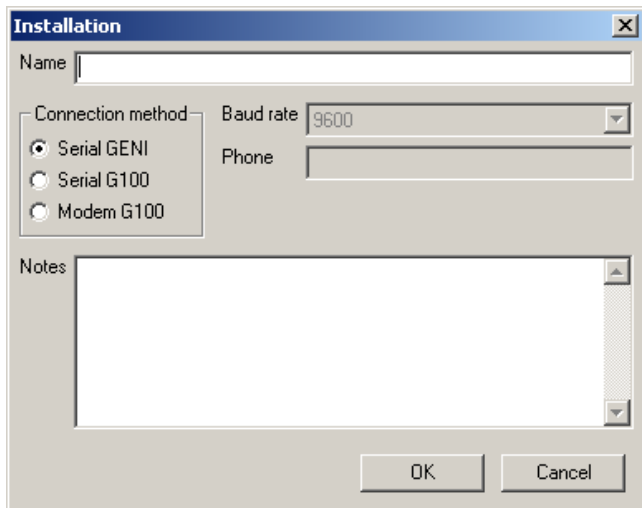
To add the current installation to **My installations**, click **[Create new]**.



Enter a **Name**, select a **Phone** number, a **Connection method** and, if applicable, a **Baud rate**.

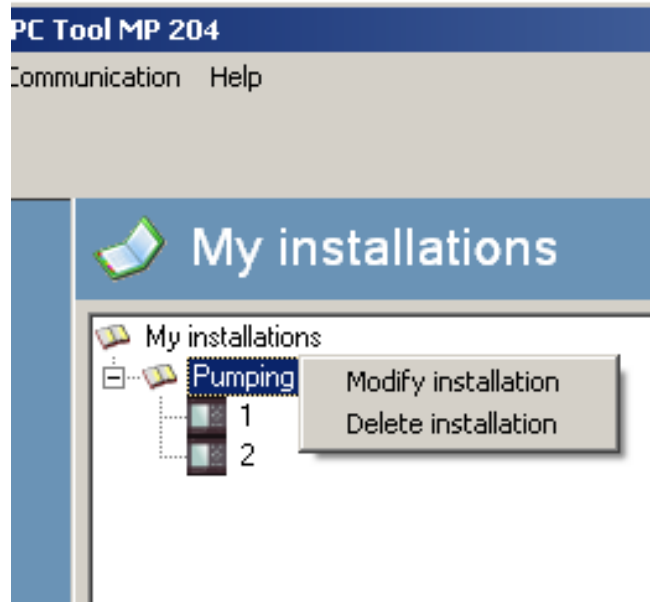
As additional information, you can enter a short description in the **Notes** field.

Click **[OK]**.

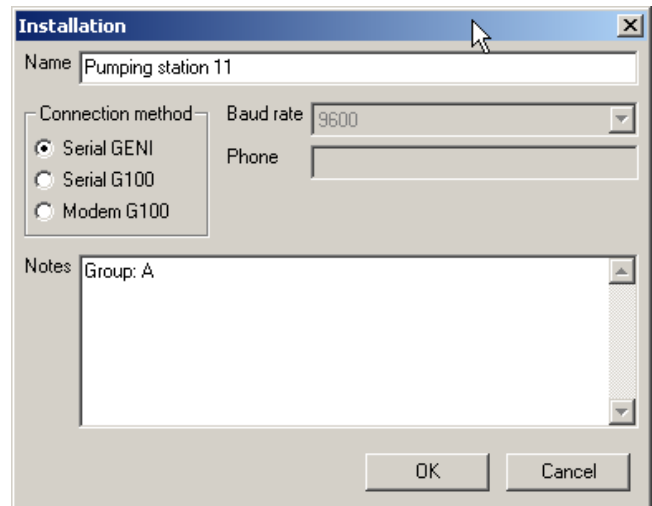


8.2 Managing installations

To modify or delete an installation, right-click on the relevant installation and select **Modify installation** or **Delete installation**.



When you have modified the installation, click **[OK]**.



8.3 Managing units

To modify a unit, change the position of the unit or delete a unit, right-click on the relevant unit and select

Modify unit – Modifies the settings of the unit.

Move unit up – Changes the position of the unit.

The top most unit will be shown as left most unit in the **Monitor** and **Edit & view settings** sections.

Move unit down – Changes the position of the unit.

Delete unit – Deletes the unit from the installation.



When you have modified the unit, click [OK].

Device	
Name	1
Geni address	1
Geni family	7
Geni type	1
Geni version	0
Notes	
<div>OK</div> <div>Cancel</div>	

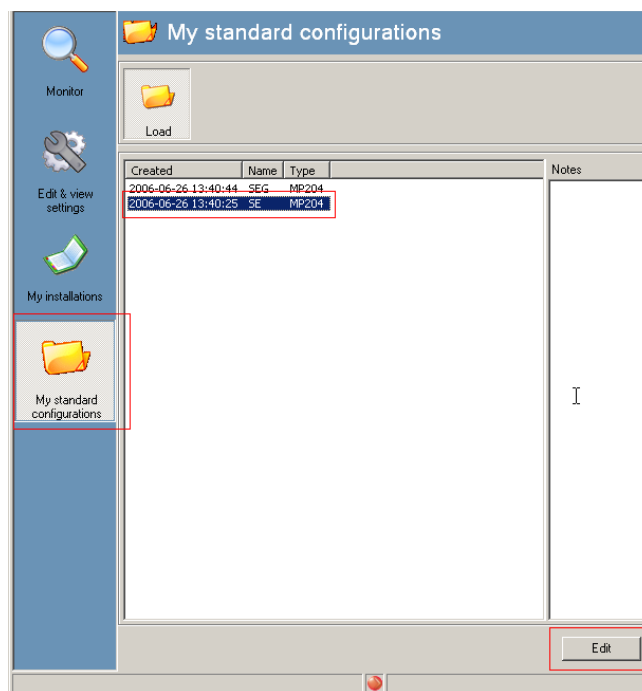
9. My standard configurations

9.1 My standard configurations

A standard configuration is a template containing settings for a specific pump type. i.e. a pump with temperature sensor.

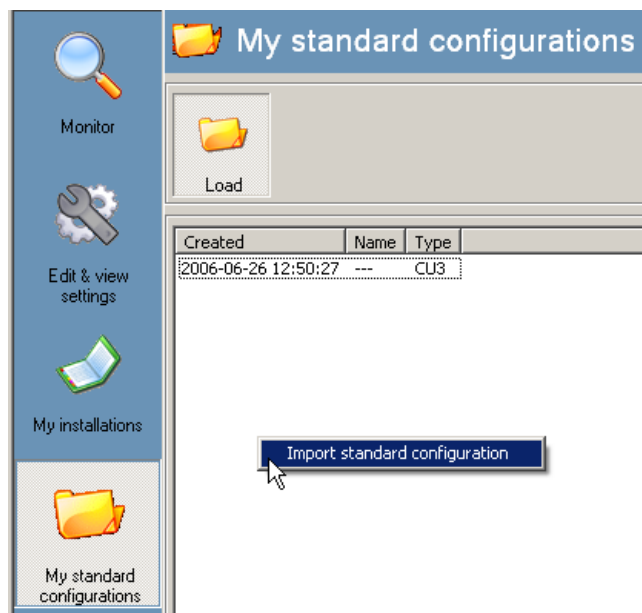
To view or modify a standard configuration, click **My standard configurations**. Select the configuration and click **[Modify]**.

Modify the standard configuration as described in section **Edit & view settings**.

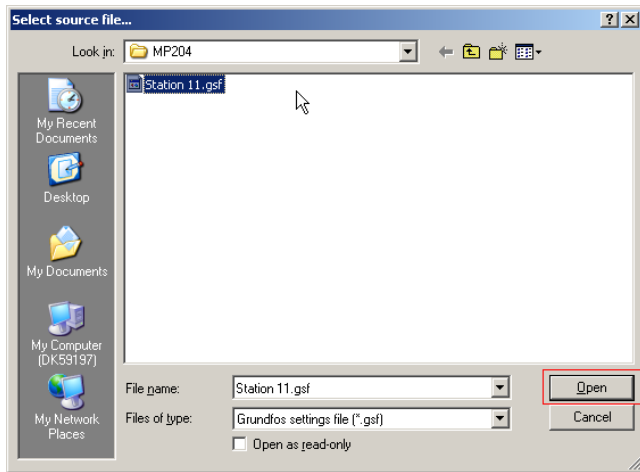


9.2 Importing a standard configuration

To import a standard configuration, right-click on an empty space and select **[Import standard configuration]**.

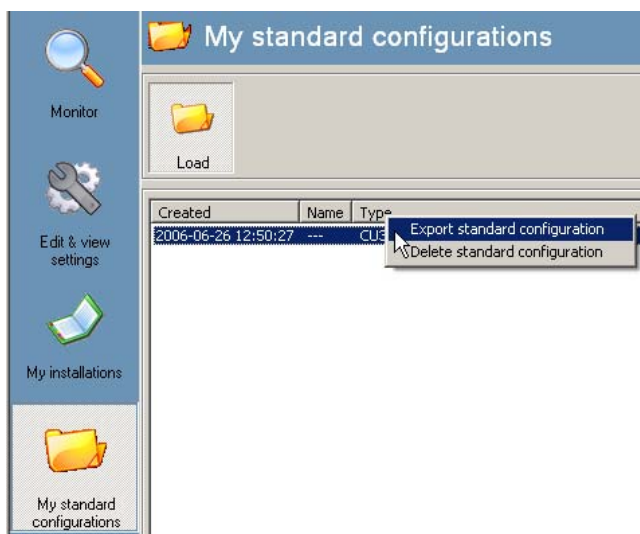


Browse to the file and select the file. Click **[Open]**.

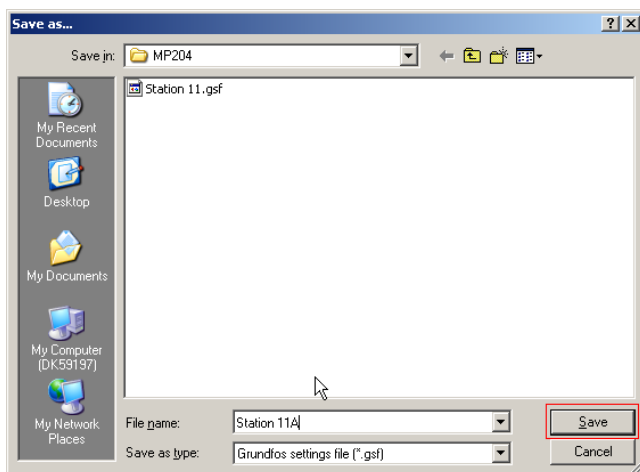


9.3 Exporting a standard configuration

To export a standard configuration, right-click the relevant configuration and select **[Export standard configuration]**.



Browse to the folder where you want the configuration file to be saved and enter a name. Click **[Save]**.

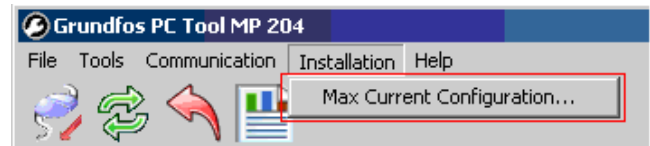


10. CU 3

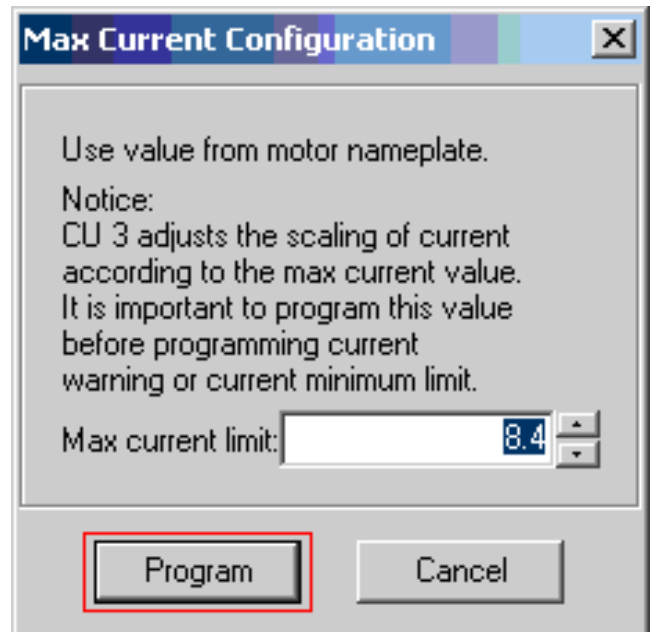
10.1 CU 3 max. current configuration

To program the **max. current limit**, click **Installation** and select **Max. current configuration...**

Note: This must be done before programming current warning and current minimum limit.



Enter **Max. current limit**. Use the value from the motor nameplate. Click **[Program]**.



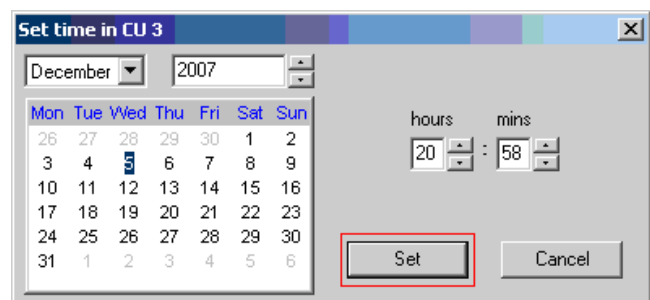
10.2 Adjusting time in the CU 3

To adjust the time, click the clock icon.

Note: This function will not work with all versions of the G100.



Adjust time and date and click **[Set]**.



Subject to alterations.

Denmark

GRUNDFOS DK A/S
Martin Bachs Vej 3
DK-8850 Bjerringbro
Tlf.: +45-87 50 50 50
Telefax: +45-87 50 51 51
E-mail: info_GDK@grundfos.com
www.grundfos.com/DK

Argentina

Bombas GRUNDFOS de Argentina S.A.
Ruta Panamericana km. 37.500 Lote 34A
1619 - Garin
Pcia. de Buenos Aires
Phone: +54-3327 414 444
Telefax: +54-3327 411 111

Australia

GRUNDFOS Pumps Pty. Ltd.
P.O. Box 2040
Regency Park
South Australia 5942
Phone: +61-8-8461-4611
Telefax: +61-8-8340 0155

Austria

GRUNDFOS Pumpen Vertrieb Ges.m.b.H.
Grundfosstraße 2
A-5082 Grödig/Salzburg
Tel.: +43-6246-883-0
Telefax: +43-6246-883-30

Belgium

N.V. GRUNDFOS Bellux S.A.
Boomsesteenweg 81-83
B-2630 Aartselaar
Tél.: +32-3-870 7300
Télécopie: +32-3-870 7301

Belorussia

Представительство ГРУНДФОС в
Минске
220090 Минск ул.Олешева 14
Телефон: (8632) 62-40-49
Факс: (8632) 62-40-49

Bosnia/Herzegovina

GRUNDFOS Sarajevo
Paromlinska br. 16,
BiH-71000 Sarajevo
Phone: +387 33 713290
Telefax: +387 33 231795

Brazil

GRUNDFOS do Brasil Ltda.
Rua Tomazina 106
CEP 83325 - 040
Pinhais - PR
Phone: +55-41 668 3555
Telefax: +55-41 668 3554

Bulgaria

GRUNDFOS Pumpen Vertrieb
Representative Office - Bulgaria
Bulgaria, 1421 Sofia
Lozenetz District
105-107 Arsenalski blvd.
Phone: +359 2963 3820, 2963 5653
Telefax: +359 2963 1305

Canada

GRUNDFOS Canada Inc.
2941 Brighton Road
Oakville, Ontario
L6H 6C9
Phone: +1-905 829 9533
Telefax: +1-905 829 9512

China

GRUNDFOS Pumps (Shanghai) Co. Ltd.
22 Floor, Xin Hua Lian Building
755-775 Huai Hai Rd, (M)
Shanghai 200020
PRC
Phone: +86-512-67 61 11 80
Telefax: +86-512-67 61 81 67

Croatia

GRUNDFOS predstavništvo Zagreb
Cebini 37, Buzin
HR-10000 Zagreb
Phone: +385 1 6595 400
Telefax: +385 1 6595 499

Czech Republic

GRUNDFOS s.r.o.
Čapkovského 21
779 00 Olomouc
Phone: +420-585-716 111
Telefax: +420-585-716 299

Estonia

GRUNDFOS Pumps Eesti OÜ
Peterburi tee 44
11415 Tallinn
Tel: + 372 606 1690
Fax: + 372 606 1691

Finland

OY GRUNDFOS Pumput AB
Mestarintie 11
Piispankylä
FIN-01730 Vantaa (Helsinki)
Phone: +358-9 878 9150
Telefax: +358-9 878 91550

France

Pompes GRUNDFOS Distribution S.A.
Parc d'Activités de Chesnes
57, rue de Malacombe
F-38290 St. Quentin Fallavier (Lyon)
Tél.: +33-4 74 82 15 15
Télécopie: +33-4 74 94 10 51

Germany

GRUNDFOS GMBH
Schlüterstr. 33
40699 Erkrath
Tel.: +49-(0) 211 929 69-0
Telefax: +49-(0) 211 929 69-3799
e-mail: infoservice@grundfos.de
Service in Deutschland:
e-mail: kundendienst@grundfos.de

Greece

GRUNDFOS Hellas A.E.B.E.
20th km. Athinon-Markopoulou Av.
P.O. Box 71
GR-19002 Peania
Phone: +0030-210-66 83 400
Telefax: +0030-210-66 46 273

Hong Kong

GRUNDFOS Pumps (Hong Kong) Ltd.
Unit 1, Ground floor
Siu Wai Industrial Centre
29-33 Wing Hong Street &
68 King Lam Street, Cheung Sha Wan
Kowloon
Phone: +852-27861706/27861741
Telefax: +852-27858664

Hungary

GRUNDFOS Hungária Kft.
Park u. 8
H-2045 Törökbálint,
Phone: +36-23 511 110
Telefax: +36-23 511 111

India

GRUNDFOS Pumps India Private Limited
118 Old Mahabalipuram Road
Thoraiakkam
Chamiers Road
Chennai 600 096
Phone: +91-44 2496 6800

Indonesia

PT GRUNDFOS Pompa
Jl. Rawa Sumur III, Blok III / CC-1
Kawasan Industri, Pulogadung
Jakarta 13930
Phone: +62-21-460 6909
Telefax: +62-21-460 6910/460 6901

Ireland

GRUNDFOS (Ireland) Ltd.
Unit A, Merrywell Business Park
Ballymount Road Lower
Dublin 12
Phone: +353-1-4089 800
Telefax: +353-1-4089 830

Italy

GRUNDFOS Pompe Italia S.r.l.
Via Gran Sasso 4
I-20060 Truccazzano (Milano)
Tel.: +39-02-95838112
Telefax: +39-02-95309290/95838461

Japan

GRUNDFOS Pumps K.K.
1-2-3, Shin Miyakoda
Hamamatsu City
Shizuoka pref. 431-21
Phone: +81-53-428 4760
Telefax: +81-53-484 1014

Korea

GRUNDFOS Pumps Korea Ltd.
6th Floor, Aju Building 679-5
Yeoksam-dong, Kangnam-ku, 135-916
Seoul, Korea
Phone: +82-2-5317 600
Telefax: +82-2-5633 725

Latvia

SIA GRUNDFOS Pumps Latvia
Deglava biznesa centrs
Augusta Deglava ielā 60, LV-1035, Rīga,
Tālr.: + 371 714 9640, 7 149 641
Fakss: + 371 914 9646

Lithuania

GRUNDFOS Pumps UAB
Smolensko g. 6
LT-03201 Vilnius
Tel: + 370 52 395 430
Fax: + 370 52 395 431

Malaysia

GRUNDFOS Pumps Sdn. Bhd.
7 Jalan Peguam U1/25
Glenmarie Industrial Park
40150 Shah Alam
Selangor
Phone: +60-3-5569 2922
Telefax: +60-3-5569 2866

Mexico

Bombas GRUNDFOS de Mexico S.A. de
C.V.
Boulevard TLC No. 15
Parque Industrial Stiva Aeropuerto
Apodaca, N.L. 66600
Mexico
Phone: +52-81-8144 4000
Telefax: +52-81-8144 4010

Netherlands

GRUNDFOS Nederland B.V.
Postbus 104
NL-1380 AC Weesp
Tel.: +31-294-492 211
Telefax: +31-294-492244/492299

New Zealand

GRUNDFOS Pumps NZ Ltd.
17 Beatrice Tinsley Crescent
North Harbour Industrial Estate
Albany, Auckland
Phone: +64-9-415 3240
Telefax: +64-9-415 3250

Norway

GRUNDFOS Pumper A/S
Strømsveien 344
Postboks 235, Leirdal
N-1011 Oslo
Tlf.: +47-22 90 47 00
Telefax: +47-22 32 21 50

Poland

GRUNDFOS Pompy Sp. z o.o.
ul. Klonowa 23
Baranowo k. Poznania
PL-62-081 Przeźmierowo
Phone: (+48-61) 650 13 00
Telefax: (+48-61) 650 13 50

Portugal

Bombas GRUNDFOS Portugal, S.A.
Rua Calvet de Magalhães, 241
Apartado 1079
P-2770-153 Paço de Arcos
Tel.: +351-21-440 76 00
Telefax: +351-21-440 76 90

Romania

GRUNDFOS Pompe România SRL
Bd. Biruintei, nr 103
Pantelimon county Ilfov
Phone: +40 21 200 4100
Telefax: +40 21 200 4101
E-mail: romania@grundfos.ro

Russia

ООО Грундфос
Россия, 109544 Москва, Школьная 39
Тел. (+7) 095 737 30 00, 564 88 00
Факс (+7) 095 737 75 36, 564 88 11
E-mail grundfos.moscow@grundfos.com

Serbia and Montenegro

GRUNDFOS Predstavništvo Beograd
Dr. Milutina Ivkovića 2a/29
YU-11000 Beograd
Phone: +381 11 26 47 877, 11 26 47 496
Telefax: +381 11 26 48 340

Singapore

GRUNDFOS (Singapore) Pte. Ltd.
24 Tuas West Road
Jurong Town
Singapore 638381
Phone: +65-6865 1222
Telefax: +65-6861 8402

Slovenia

GRUNDFOS PUMPEN VERTRIEB
Ges.m.b.H.,
Podružnica Ljubljana
Blatnica 1, SI-1236 Trzin
Phone: +386 1 563 5338
Telefax: +386 1 563 2098
E-mail: slovenia@grundfos.si

Spain

Bombas GRUNDFOS España S.A.
Camino de la Fuentecilla, s/n
E-28110 Algete (Madrid)
Tel.: +34-91-848 8800
Telefax: +34-91-628 0465

Sweden

GRUNDFOS AB
Lunnagårdsgatan 6
431 90 Mölndal
Tel.: +46-0771-32 23 00
Telefax: +46-31 331 94 60

Switzerland

GRUNDFOS Pumpen AG
Bruggacherstrasse 10
CH-8117 Fällanden/ZH
Tel.: +41-1-806 8111
Telefax: +41-1-806 8115

Taiwan

GRUNDFOS Pumps (Taiwan) Ltd.
7 Floor, 219 Min-Chuan Road
Taichung, Taiwan, R.O.C.
Phone: +886-4-2305 0868
Telefax: +886-4-2305 0878

Thailand

GRUNDFOS (Thailand) Ltd.
947/168 Moo 12, Bangna-Trad Rd., K.M.
3,
Bangna, Phrakonong
Bangkok 10260
Phone: +66-2-744 1785 ... 91
Telefax: +66-2-744 1775 ... 6

Turkey

GRUNDFOS POMPA San. ve Tic. Ltd. Sti.
Gebze Organize Sanayi Bölgesi
Ihsan dede Caddesi,
2. yol 200. Sokak No. 204
41490 Gebze/ Kocaeli
Phone: +90 - 262-679 7979
Telefax: +90 - 262-679 7905
E-mail: satis@grundfos.com

Ukraine

ТОВ ГРУНДФОС Україна
ул. Владимирская, 71, оф. 45
г. Киев, 01033, Украина,
Тел. +380 44 289 4050
Факс +380 44 289 4139

United Arab Emirates

GRUNDFOS Gulf Distribution
P.O. Box 16768
Jebel Ali Free Zone
Dubai
Phone: +971-4- 8815 166
Telefax: +971-4-8815 136

United Kingdom

GRUNDFOS Pumps Ltd.
Grovebury Road
Leighton Buzzard/Beds. LU7 8TL
Phone: +44-1525-850000
Telefax: +44-1525-850011

U.S.A.

GRUNDFOS Pumps Corporation
17100 West 118th Terrace
Olathe, Kansas 66061
Phone: +1-913-227-3400
Telefax: +1-913-227-3500

Uzbekistan

Представительство ГРУНДФОС в
Ташкенте
700000 Ташкент ул.Усмана Носира 1-й
тулик 5
Телефон: (3712) 55-68-15
Факс: (3712) 53-36-35

XXXXXXXX XXXX	GB
Repl. XXXXXXXX XXXX	