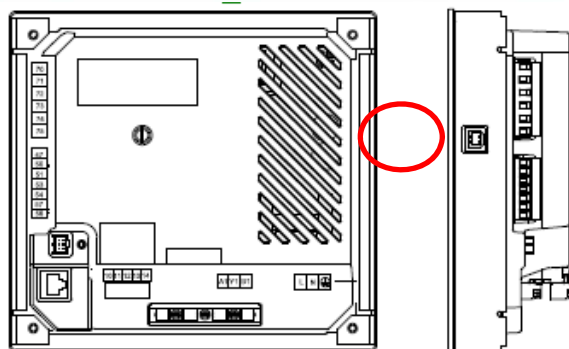
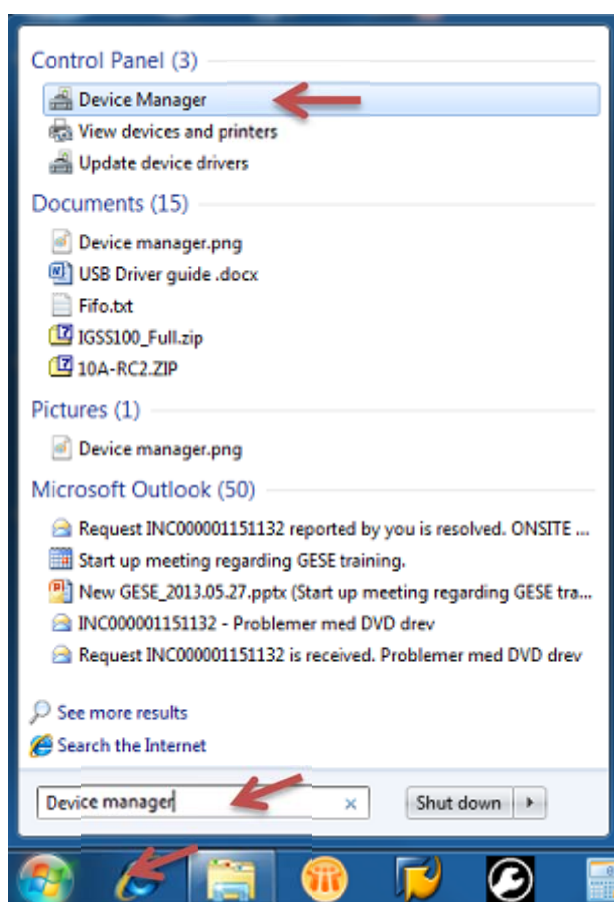


CU3x2 USB driver installation guide

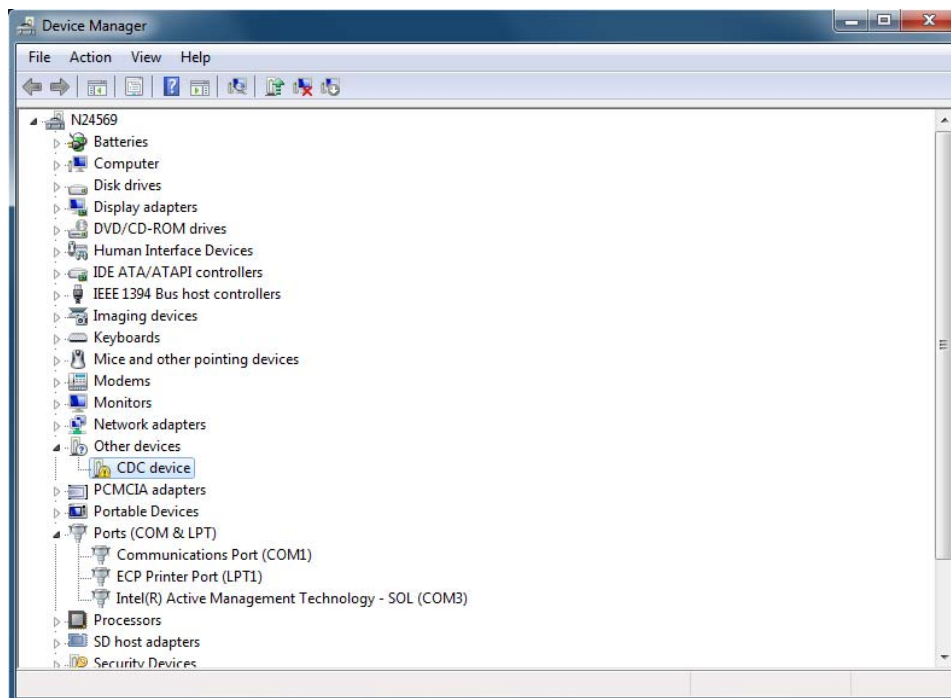


Note: You need admin rights on your computer to install this driver!

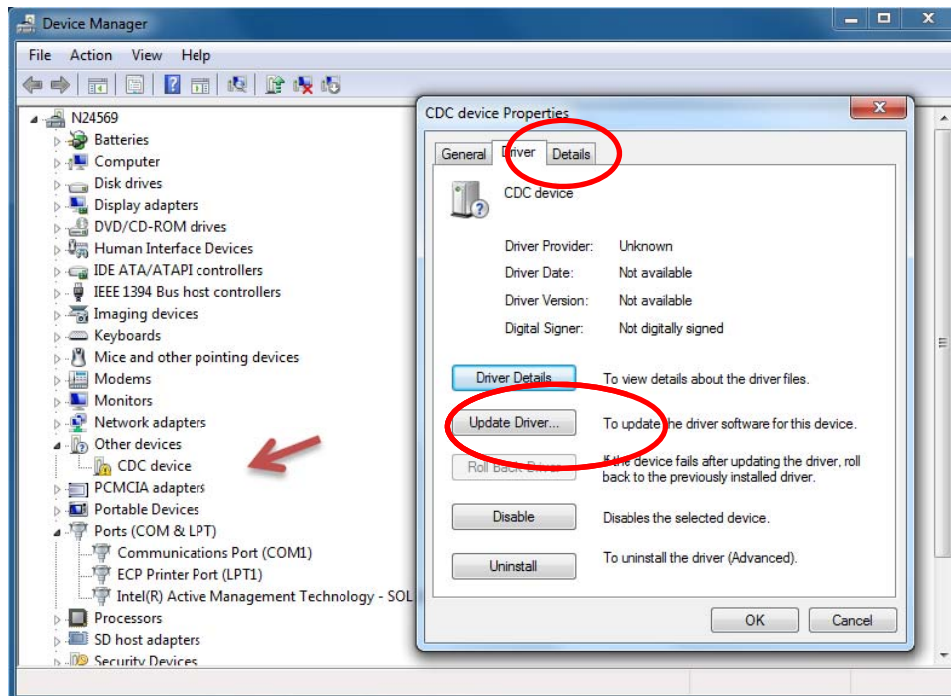
1. Download the “CDC USB driver” from Grundfos GTI or from Grundfos WebCAPS and save the driver package on the computer
2. Unzip the driver package in a folder that is not going to be deleted. If the folder is deleted the drive is lost and the USB connection fails, so make a permanent folder for this driver
3. Open Device Manager on the computer
Search for device manager in search option in “start menu”



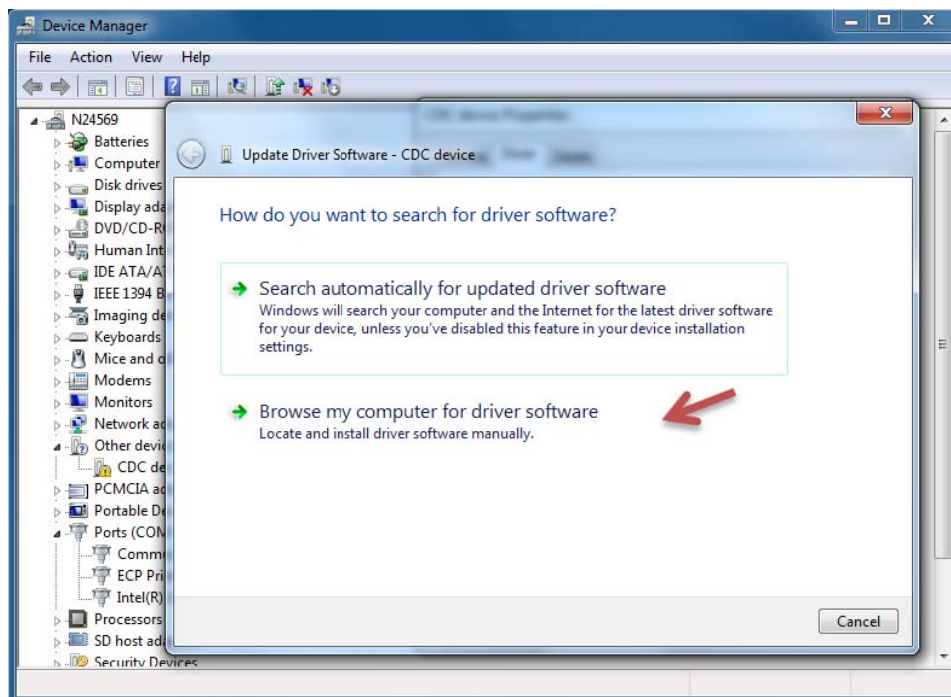
4. Plug in USB cable to the CU3x2 and turn on CU3x2
5. “CDC device” should popup in “Device Manager” when CU3x2 is powered up



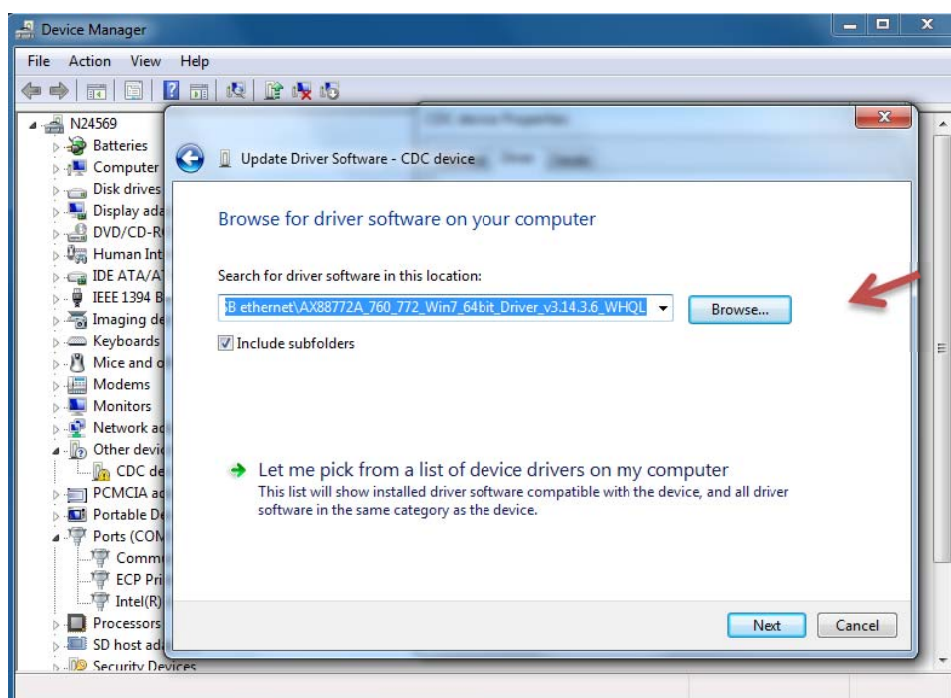
6. Right click on the “CDC device” and choose “Properties”
7. Choose “Driver” pane in the Properties window
8. Choose “Update Driver”



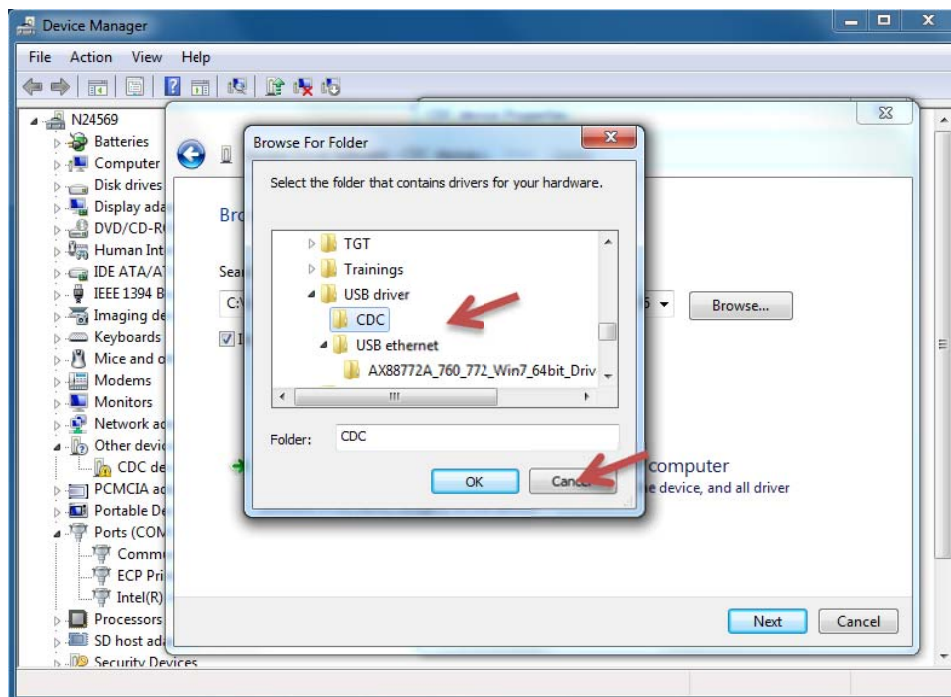
9. Choose “Browse my computer for driver software”



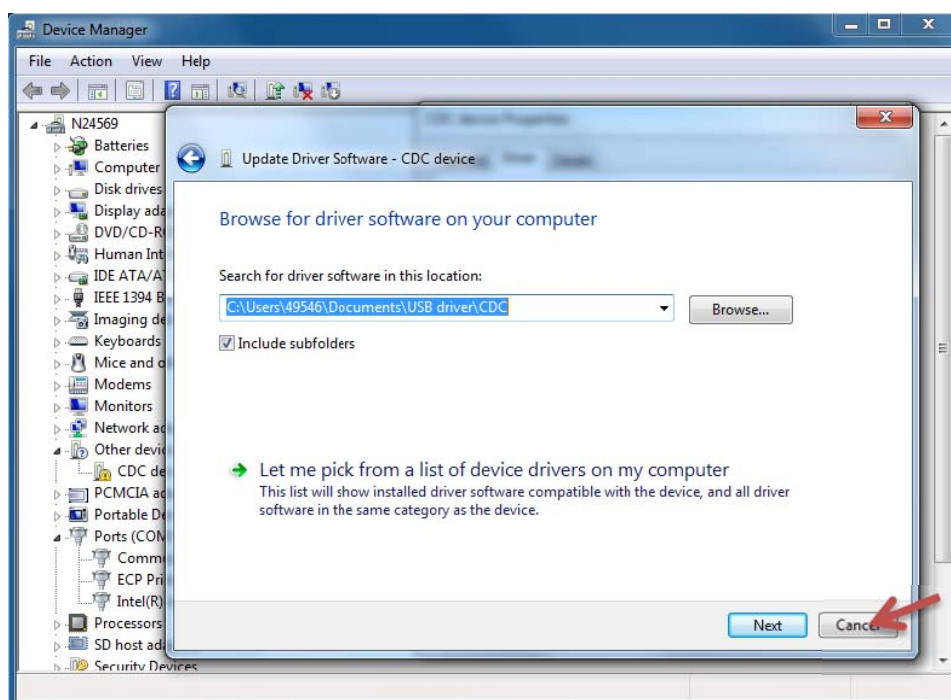
10. Choose “Browse”



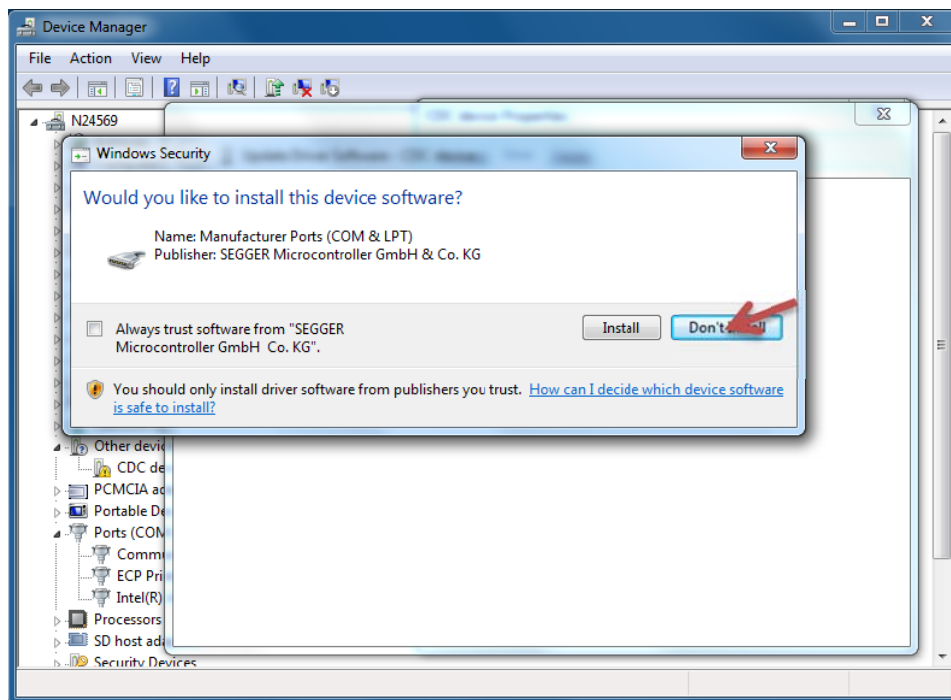
11. Pick the folder where the downloaded driver is located and press “OK”



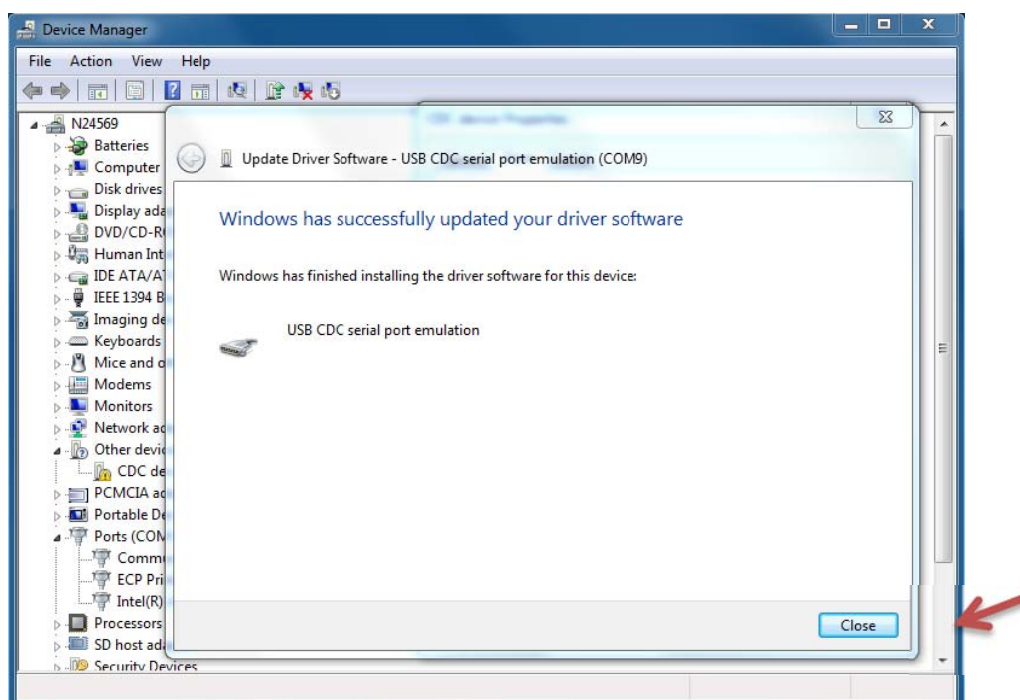
12. After browsing for the folder choose “next”



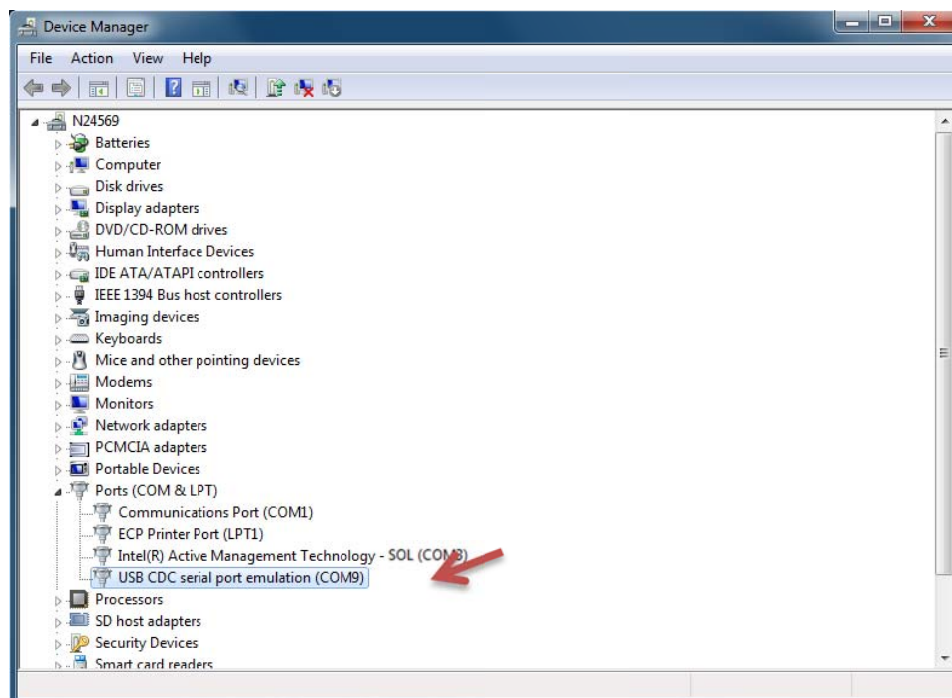
13. Choose “Install” if you want the driver to be installed on your computer



14. When the driver has installed click “Close”



15. When driver has been successfully installed “Device Manager “ should look like this:



That's it; you should now be set to connect your CU3x2 to the different PC Tools supplied from Grundfos. Enjoy ☺